

**Accelerating sustainability with science**  
in supporting organizations to achieve net zero

## Our Journey

# From Research to Real Impact

2026

### Driving Measurable Results

Has been involved in **40+ project areas** and successfully calculating **185.77+ million tCO2e** GHG emissions in industries.

2025

### Expanding Impact & Influence

Appointed to lead Science Based Targets Network (SBTN) initiatives in Southeast Asia, expanding services beyond climate into nature and circular economy.

2024

### Establishment & Market Entry

Officially established as a private company, expanding partnerships and scaling impact across sectors.

2021

### Incubated Within WRI INDONESIA

Established to bridge research and business, transforming frameworks into practical solutions.

## Our Mission

# Making Sustainability Work

To ensure that every sustainability action a company takes is measurable, meaningful, and aligned with science.

## Net Zero

We partner companies to achieve their net zero target while optimizing business operation.

## Simplified

We also help companies to understand their impact in the easiest way possible.

## Current Core Portfolio



Climate



Nature



Circular  
Economy

# Changing market dynamics are reshaping how companies position themselves for growth

72%

**global consumers** are willing to pay more for sustainable products



Companies must keep accountable through **science-based decarbonization progress**

77%

**shareholders** prefer to hold companies accountable on climate crisis & inequality



Companies must act now to **capture low-carbon value** and **avoid the cost of inaction.**

More

**governments** set up national climate regulations to ratify international climate targets



Companies must **anticipate regulation** and phase transformation **proactively.**



The Future of Business is **Net Zero Business**

# Who We Are

Get to Know Us



is a private **advisory and implementation partner** supporting organizations in addressing critical sustainability challenges.

We help clients translate ambition into action and accelerate science-based solutions for long-term impact.

# Strategy Advisory

Turning Insight into Direction

## Capacity Building & Sustainability Awareness

Internal training and knowledge-building to ensure teams understand climate, emissions, and sustainability fundamentals.



## GHG Accounting & Emissions Baseline

GHG inventories (Scope 1, 2, and 3) and product accounting (LCA) aligned with GHG Protocol and ISO standards, including baseline assessment and data verification.



## Nature Impact Assessment

Identification of environmental impact and risk hotspots, including climate, nature-related impact, and biodiversity considerations.



## Science-Based Target Setting

Measurable and credible targets for emissions reduction and nature-related goals, aligned with global frameworks and net-zero ambition.



## ESG, Sustainability, and Net-Zero Roadmap

Translation of baseline and targets into actionable strategy, including sustainability roadmaps, ESG strategy, and net-zero transition pathways.



# Implementation Partner

Turning Strategy into Action

## Certification & Compliance Support

Consultation and preparation for environmental and sustainability certifications, including ISO 14001, ISO 14064, PROPER, and other relevant standards and compliance frameworks.



## Emission Reduction Initiatives

Decarbonization across operations and value chains, including energy efficiency, renewable energy transition, and supply-chain engagement



## Waste Reduction & Circular Economy Programs

Practical initiatives to reduce waste, improve resource efficiency, and support the transition toward more circular business practices.



## Nature-Based Solutions & Environmental Action

Nature-focused initiatives including biodiversity actions, ecosystem restoration, and nature-based solutions aligned with sustainability targets.



## Sustainability Reporting & ESG Ratings Support

Reports aligned with GRI Standards and improved performance in ESG platforms such as CDP, MSCI, Sustainalytics, S&P, and other global frameworks.



# Why Choose Us?

Bestari is your trusted partner for end-to-end sustainability and emissions reduction. We provide a one-stop solution across a wide range of sustainability services.

## In-house Approach



Limited expertise



Slow ramp-up



Fixed-cost

## Bestari Tailored Services



Specialized experts



Predictable time



Project-based investment



### Science-based Methodology

Bestari aligns all strategies and reporting with globally recognized standards and frameworks (GHG Protocol, CDP, SBTN, SBTi)

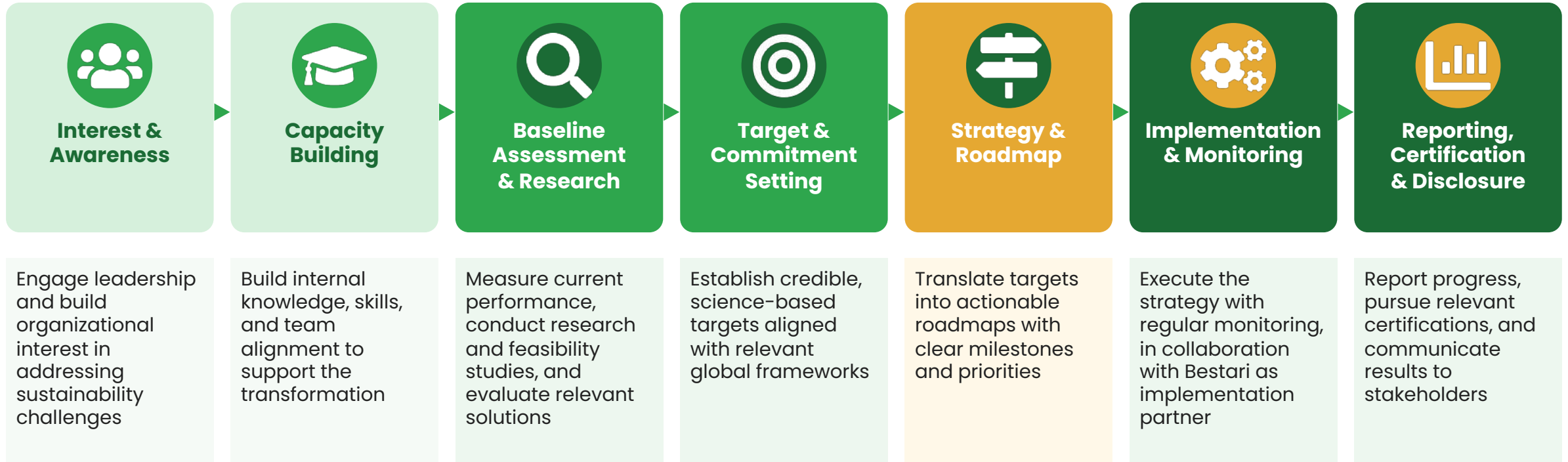


### Global Standards with Local Expertise

Combining international credibility with local context, ensuring appropriate implementation for national needs

# Our Approach: Corporate Decarbonization Journey

We guide companies through a structured, end-to-end process to turn **sustainability ambition into measurable action**, applicable across climate, circular economy, nature, and other critical challenges.



We implement our approach across leading sustainability frameworks & standards such as:

<p><b>Climate &amp; Decarbonization</b></p>	<p><b>Circular Economy</b></p>	<p><b>Nature &amp; Biodiversity</b></p>	<p><b>ESG Rating &amp; Reporting</b></p>
---	--------------------------------	---	--

# Driving Sustainable Impacts Across Indonesia

We have trusted by clients from various industries to deliver excellence and drive sustainable change for business.

## Our Leading Clients



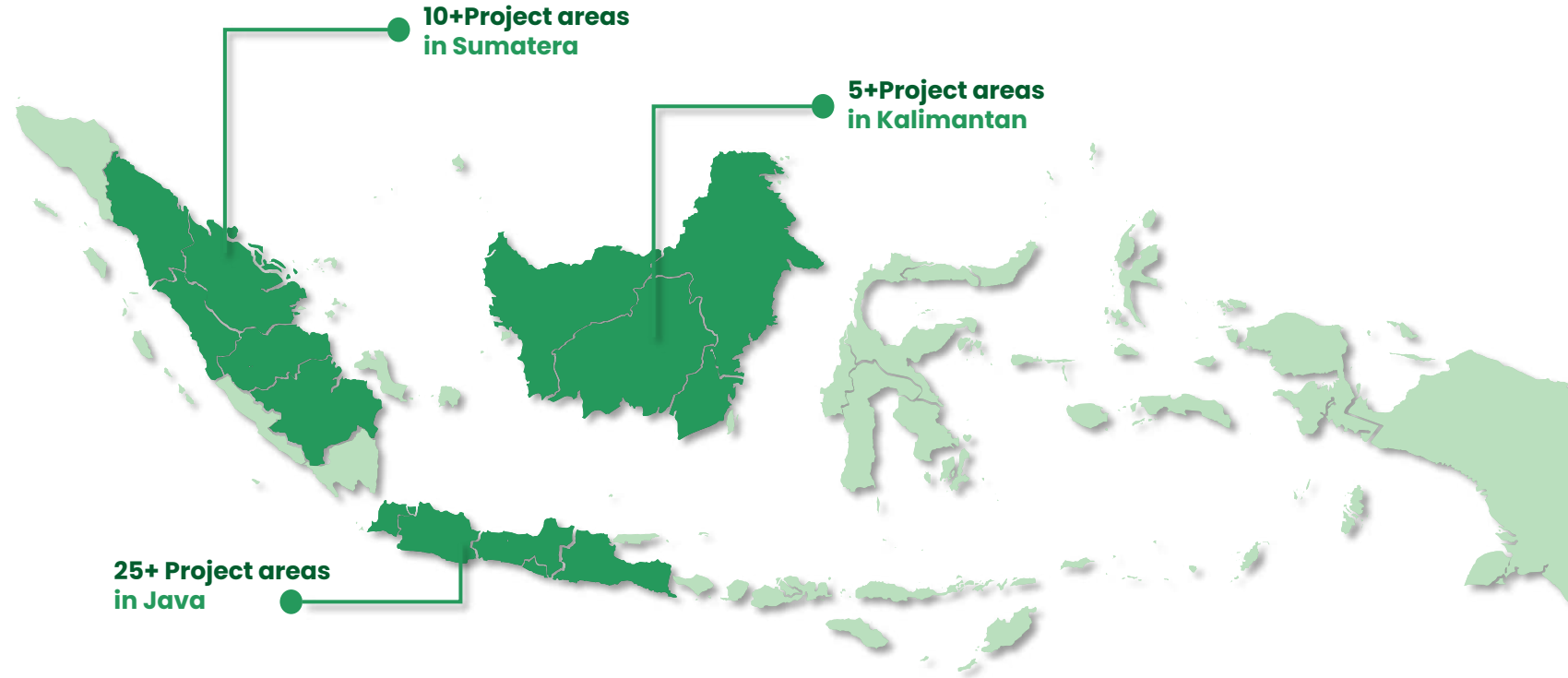
## Project Areas

**40+** Region across Indonesia

## Total Emission Calculated

**185.77+** million tCO<sub>2</sub>e

Trusted by the companies that shape Indonesia's economy, to build the **sustainability strategies that will define its future.**



# Impact that Extends Beyond Advisory

We work closely to related key stakeholder to ensure sustainability work for business.



As **Southeast Asia's Regional Coordinator for the Science Based Targets Network**, our influence reaches beyond client work, shaping the regional sustainability agenda at the highest levels.

**~250-300** Companies have engaged through SBTN outreach & public activities in 2025

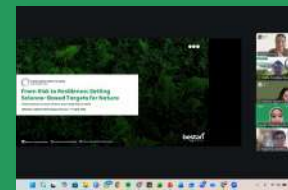


Our partners in accelerating Science-Based for Nature for business in Southeast Asia:



Bestari also strengthen public awareness through several engagements to accelerate sustainable goals, starting from:

## Speaking Engagement in



WBCSD Nature Reporting Preparer Forum 2026



SBTN Corporate Engagement Learning Program 2026



RSPO Roundtable Event 2025



ZE Talk: Inventarisasi Emisi GRK Sektor Bisnis 2025

# Driving Impact Across Diverse industries

We have a proven track record of helping key players across industries achieve their sustainability goals.

Forest, land-use, and agriculture (FLAG)



Iron and steel manufacturing



Buildings and construction materials



Textile, Apparel, Footwear and Luxury Goods



TSH



Electric Utilities & Power Producers



Containers & Packaging



Pharmaceuticals & Life Sciences



Software & Services



# Start Your Sustainability Journey with Bestari

Not sure where to begin? We help you explore what sustainability means for your business — **at no cost.**

FREE

## Capacity Building Training

An introductory workshop for your team to understand the fundamentals of sustainable business and net zero pathways.

- ✓ What is sustainable business and why it matters
- ✓ Understanding Net Zero: concepts and corporate relevance
- ✓ ESG fundamentals and regulatory landscape in Indonesia
- ✓ Identifying quick wins for your organization

FREE

## Sustainability Needs Assessment

A tailored diagnostic to understand where your company stands and what sustainability actions will create the most value.

- ✓ Current state review of ESG readiness
- ✓ Gap analysis against regulatory requirements
- ✓ Prioritized roadmap with actionable next steps
- ✓ Customized recommendations for your industry

**Ready to explore? Contact us to schedule your free session.**

Available for companies exploring sustainability for the first time. No commitment required.



## PT Sumberdaya Dunia Lestari

📍 Wisma PMI Lantai 7, Jl. Wijaya 1 No.63,  
Kelurahan Petogogan, Kecamatan  
Kebayoran Baru, Jakarta Selatan, DKI  
Jakarta, 12160

☎️ (021) 72793830

## Get Connected

**Email** : [generaloffice@bersama-lestari.com](mailto:generaloffice@bersama-lestari.com)

**LinkedIn** : [Bestari Sustainability](#)

**Instagram** : [@bestari.sustainability](#)

**Website** : [www.bersama-lestari.com](http://www.bersama-lestari.com)